

Product Bulletin

To: Legion Customers

From: Weston Schilawski
OEI Mfg. Engineer

Date: 10/2/17

RE: Legion Open Bottom/Fabric Top Segmented Panel Configurations

Effective 10/2/17, the Legion Open Bottom/Fabric Top (standard raceway/elevated base) panel configurations are available for specification and ordering.

The segmented open panel with fabric top features an open powder coated lower hang-on aluminum frame that allows pass-through accessibility with a range of 8" to 29" from the floor. This allows the customer to utilize current wall mounted power and data receptacles along with offering an open concept feel. The segmentation line between the lower frame and upper fabric measures 32" from the floor.

Sizes are as follows:

Widths: 24", 30", 36", 42", 48", 54", 60"

Heights: 40", 48", 56", 64"

The product offering catalog is being updated to reflect this addition and will be released Q4 2017 as there are other pending changes.

Sample model numbers are shown below:

SEGMENTED BOTTOM OPEN / FABRIC TOP STANDARD RACEWAY

LSOR *Segmented Bottom Open/Top Fabric Panel Std Base Raceway*

2440 *Size*

KD *Knocked Down (Unwelded/No Upholstery)*

F or N *Flat Trim Top Cap / N =No Top Cap*

DN/DP *Domestic Non Powered / Domestic Powered*

XX *Trim Color*

Model Number

LSOR2440/KD/F/DN/XX

LSOR2440/KD/N/DN/XX

LSOR2440/KD/F/DP/XX

LSOR2440/KD/N/DP/XX

Description

24x40 Sgmntd Btm Open/Top FabPnl, NoCutouts FlatTrm TopCap DN

24x40 Sgmntd Btm Open/Top FabPnl, NoCutouts No Top Cap DN

24x40 Sgmntd Btm Open/Top FabPnl, w/Cutouts FlatTrm TopCap DP

24x40 Sgmntd Btm Open/Top FabPnl, w/Cutouts No Top Cap DP

SEGMENTED BOTTOM OPEN / FABRIC TOP ELEVATED RACEWAY

LSOL *Segmented Bottom Open/Top Fabric Panel Elevated Base Raceway*

2440 *Size*

KD *Knocked Down (Unwelded/No Upholstery)*

F or N *F=Flat Trim Top Cap / N =No Top Cap*

XX *Trim Color*

Model Number

LSOL2440/KD/F/XX

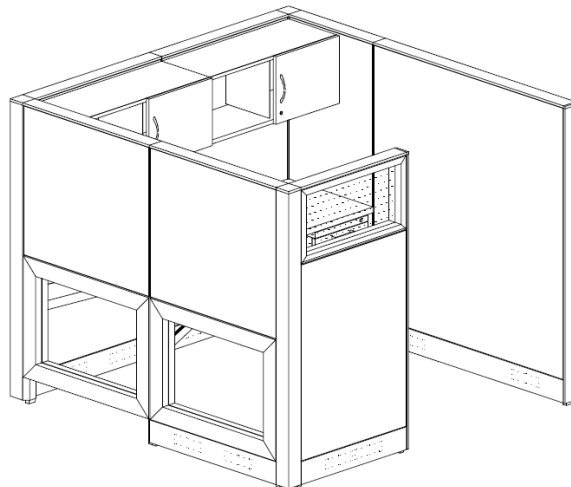
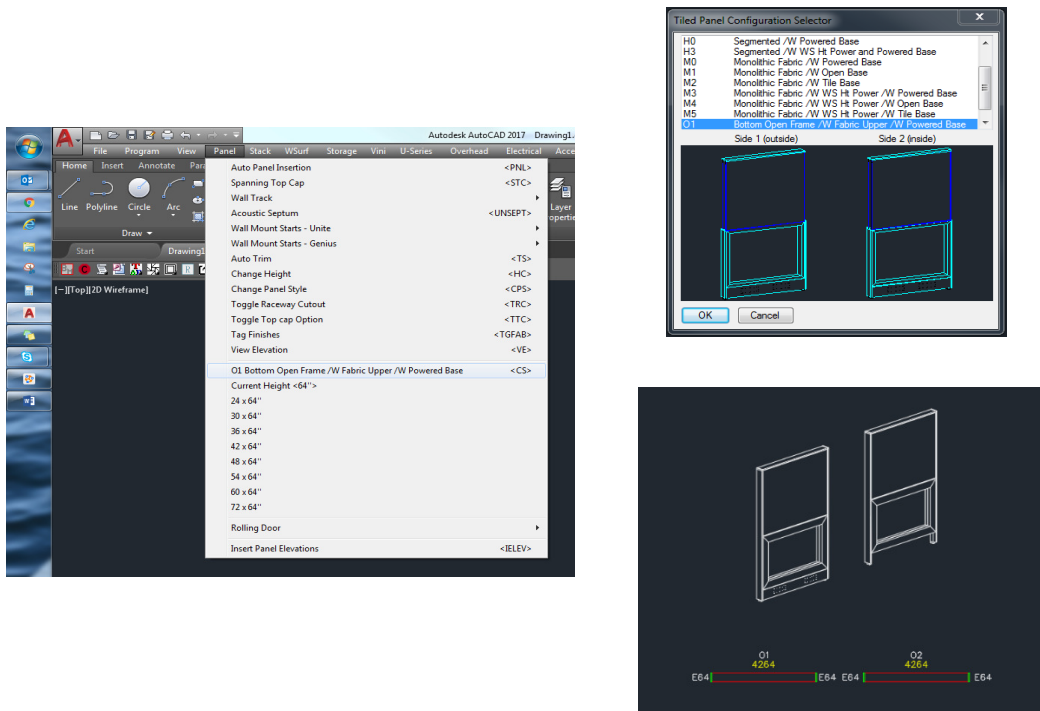
LSOL2440/KD/N/XX

Description

24x40 Sgmntd Btm Open/TopFab ElevBasePnl, Flat Trim Top

24x40 Sgmntd Btm Open/TopFab ElevBasePnl, NoTopCap

The O1/O2 panel style can be found in the Legion panel configuration selector in ECAD version 19.24+:



All factories have been provided tooling to locate the right tile stiffener as the current Legion stiffener tooling locates components up to 48" wide.

Please contact your Customer Account Coordinator or Sales to obtain model numbers and bill of materials.

Thank you,
Weston Schilawski
weston.schilawski@oei-inc.com
920.468.2538