

OEI® Product Bulletin

To: OEI State Sales, OEI Engineering, OEI Production

From: Weston Schilawski
OEI Sr. Mfg. Engineer

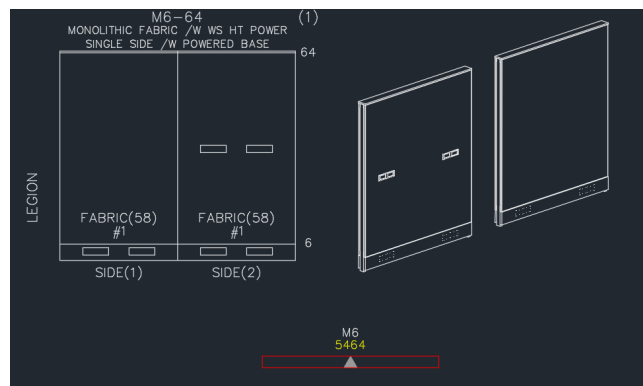
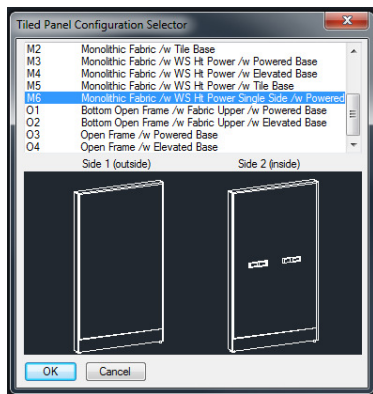
Date: 7/24/18

RE: Legion Product Addition – LMFRBW1

Effective 7/24/18, the LMFRBW1 configuration is now part of the standard Legion KD2 panel offering. This panel configuration features a monolithic tile/standard base raceway on side 1, and monolithic tile with beltway power/standard raceway on side 2. Sizes range from 24-72” widths (72” features a split-tile design), and 40-64” heights.

NOTE – the beltway-height harness mounting kit, rigid wireway, and vertical jumper still need to be specified separately, similar to all other current beltway power panel configurations.

You can find the LMFRBW1 in the Tiled Panel Configuration Selector as M6:



Sample model numbers and descriptions are shown below:

LMFRBW1	Monolithic Fabric Panel Standard Base Raceway Beltway Power(1 Side)-DP(Domestic NonPowrd)
2440	Size
KD	Knocked Down (Unwelded/No Upholstery)
F or N	F=Flat Trim Top Cap / N=No Top Cap
DN	Domestic Non Powered
BXX	Bezel Color
XX	Trim Color
FAMILY NAME:	LMFR

Model Number

LMFRBW12440/KD/F/DN/BXX/XX
 LMFRBW12440/KD/N/DN/BXX/XX
 LMFRBW12448/KD/F/DN/BXX/XX
 LMFRBW12448/KD/N/DN/BXX/XX
 LMFRBW12456/KD/F/DN/BXX/XX
 LMFRBW12456/KD/N/DN/BXX/XX
 LMFRBW12464/KD/F/DN/BXX/XX
 LMFRBW12464/KD/N/DN/BXX/XX

Description

24x40 MonoFabPnl, NoCutouts FlatTrm TopCpDN BltPwr(1Side)
 24x40 MonoFabPnl, NoCutouts No TopCap DN BltWyPwr(1Side)
 24x48 MonoFabPnl, NoCutouts FlatTrm TopCpDN BltPwr(1Side)
 24x48 MonoFabPnl, NoCutouts No TopCap DN BltWyPwr(1Side)
 24x56 MonoFabPnl, NoCutouts FlatTrm TopCpDN BltPwr(1Side)
 24x56 MonoFabPnl, NoCutouts No TopCap DN BltWyPwr(1Side)
 24x64 MonoFabPnl, NoCutouts FlatTrm TopCpDN BltPwr(1Side)
 24x64 MonoFabPnl, NoCutouts No TopCap DN BltWyPwr(1Side)

The Legion Product Offering Catalog is currently being updated to reflect this addition and will be updated to the OEI website soon.

For a full list of models and pricing, please contact your Customer Account Coordinator.

Thank you,

Weston Schilawski

weston.schilawski@oei-inc.com

(920) 468-2538